

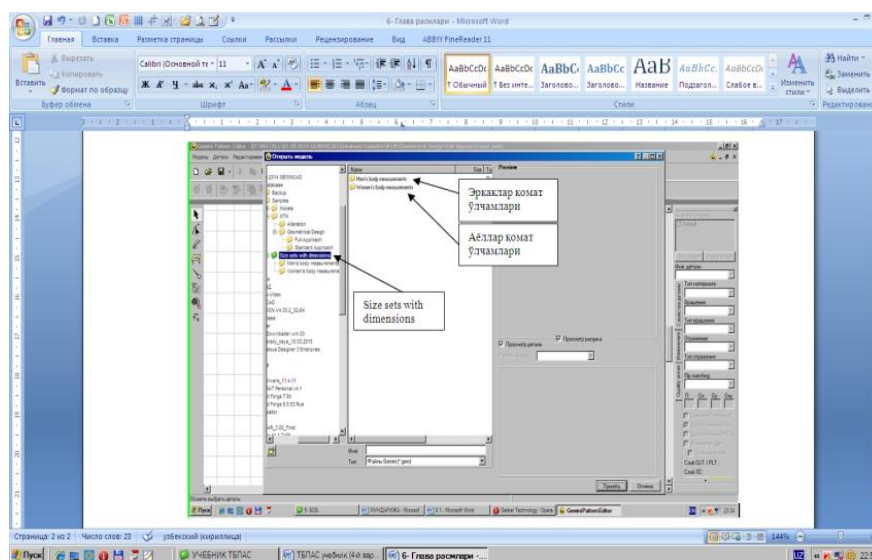
UDC: 687.01.

## DEVELOPMENT OF MULTIFUNCTIONAL CLOTHING USING GEMINI CAD PROGRAM

Z. AKHMEDOVA, M.N. SALOKHIDDINOVA  
Namangan Institute of Engineering and Technology

At present, the production of light industry products in Uzbekistan is developing, knitwear, leather, cloaks, shirts and similar fabrics are produced and exported in accordance with world standards. Today, there are about 7,000 enterprises in the country, which forms a textile industry with high production potential. Namangan region also has a large number of textile and clothing companies, which have been contracted with several countries and have been operating for years. CHUST TEXTILE, IDEAL, UZ TEX, IMIR and others are among them. These products are also well-known brands in foreign countries and have a place in the markets of the European Union, China, Russia, Bangladesh, Germany, Kazakhstan, Kyrgyzstan and several other countries.

Today, ALT (automatic design system) programs such as Gemini, Gerber, Assyst, Lectra, Investronika are used in many companies. With the help of these programs, you can create templates, calculate waste rates as a percentage, perform modeling operations, as well as perform accounting work, create monthly and annual reports.



**Fig.1. Selecting a sizing chart in the Gemini Pattern Editor**

Gemini CAD is a new development of Gemini CAD Systems in the field of design of clothing, footwear, hats, bags, leather goods, furniture upholstery. The Gemini CAD system meets the requirements of production enterprises of different capacities: design\_studio, small and medium-sized enterprises, large-scale production and others. The Gemini CAD program was founded in 2002 by Luca Troyan at Gemini CAD Systems in Romania.

It is better to use the Gemini CAD program in the development of multifunctional clothing, because the design of seasonal jackets for men focuses on

## Resource-Saving Technologies of Apparel, Textile & Food Industry

its precise calculations, physical-mechanical, ergonomic, hygienic, economic requirements, quality and modern appearance. With the addition of multifunctionality to the range of indicators, these clothes can be used not only as winter clothes, but also for the spring-autumn season.

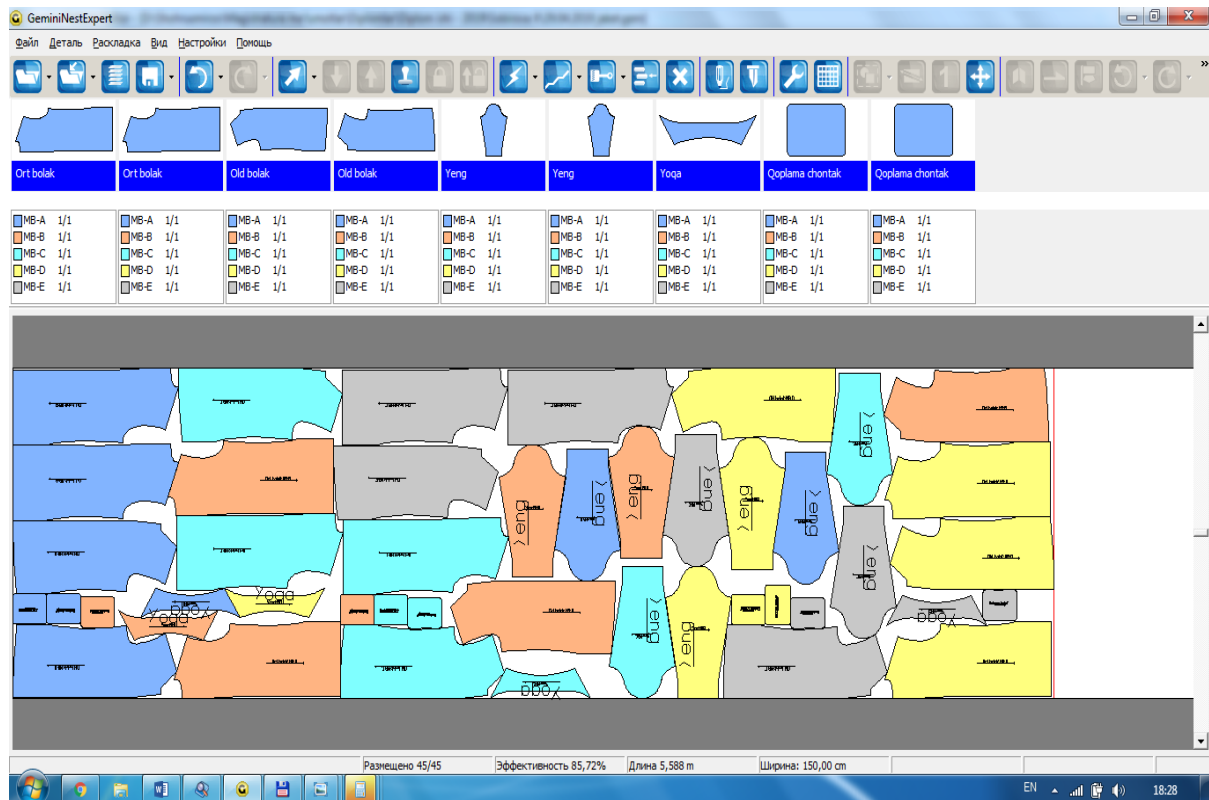


Fig. 2. Location of templates in Gemini Nest Expert

When designing a jacket with the help of the program "Gemini CAD", the gradation of templates on sizes and heights, parameters can be performed in a parametric or automatic way. Quick modeling of the basic design drawing with the help of the module from 0, input and processing of ready-made templates on the computer with the help of a photo digitizer, modification of templates from the database in accordance with the model characteristics, combinatorial modification of previously developed templates in the database. It is possible to design new models based on.

### References

1. F.U. Nigmatova, M.Sh.Shomansurova. "Automated system of sewing design". Textbook. For students and masters of higher education – Tashkent: 2017, 268 pages.
2. Sh.G. Madjidova, M.K. Rasulova, Technological process design. Textbook, – T., TTYeSI, 2011y-177 p.
3. Serova T.M., Afanaseva A.I. Illarionova T.I., Del R.A. Modern forms and methods of design of Swedish production: Uchebnoe posobie – M; MGUDT, 2004 pp-283.
4. P.P. Koketkin Clothes: technology-technique, processes-quality Spravochnik – M; MGUDT, 2001 pp -577